

Through Drought and Flooding Rain

Helping farming communities recover and thrive

SUMMARY

Drought, flood and the recent dairy upheaval have inflicted major financial and social costs on farm businesses and communities in our region, with many farmers and their families under significant emotional pressure as a result of consecutive challenging seasons.

We're working closely with our partners, particularly those in Loddon, to support farming communities through what is going to be another uncertain year.

Over the past few months, we have supported a series of Mental Health First Aid courses in Wedderburn, Boort, Dingee, East Loddon and Elmore to equip farming communities and other rural residents with the skills to support their friends, family and neighbours.

In May, we joined forces with Loddon Shire Council to present the Responding to a Dry Season and Beyond forum in Powlett Plains to help local farming businesses prepare for ongoing changes in farming conditions.

We're also coordinating a Dairy Recovery Response Committee made up of service providers and local producers to manage a community-led response to the crisis. Watch this space for some exciting grassroots initiatives to help ease the pressure on communities across the region.

These projects have been made possible through funding from the Victorian Government's Drought Response Package and Dairy Response Package.

CONTACT

Rachael Jobling

Phone 03 5448 1625

Email rachaeljobling@bchs.com.au

Website www.blpcp.com.au

Address PO Box 1121, Bendigo, VIC, 3552

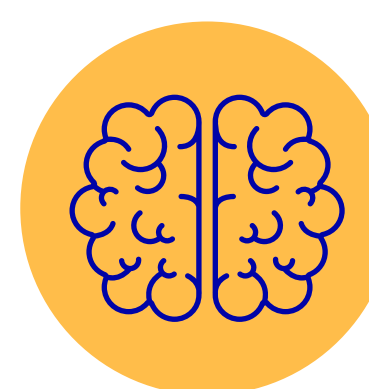
OUTCOMES



Staged Preparing for a Dry Season & Beyond event in Powlett Plains



Funded three adult Mental Health First Aid courses in City of Greater Bendigo & Loddon Shire



Funded one youth Mental Health First Aid courses in Loddon Shire



Coordinate, convene & provide secretarial support to Dairy Recovery in Loddon Committee



Distributed 120 luxury/resource packs to families via food hampers and at events

PARTNERS

